



CYPRUS UNIVERSITY OF TECHNOLOGY

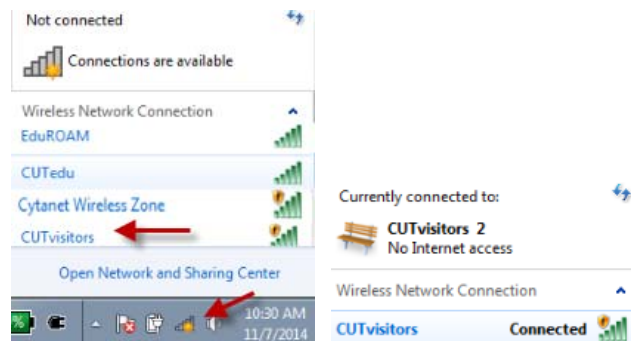
Information Systems and Technology Service

Connecting to the wireless network “CUTvisitors”

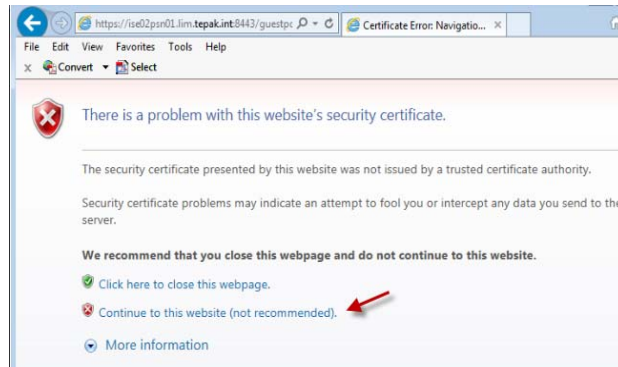
The wireless network “CUTvisitors” is designed to provide internet access to CUT visitors. To connect to this network you must obtain a temporary user account either from IST or CUT library service desk or from the secretary of the school/department/service that hosts you.

Find below brief instructions to connect to the network based on Windows 7 operating system. The instructions can be used with small variations in order to connect using different operating systems for example MAC OS, Android and Linux.

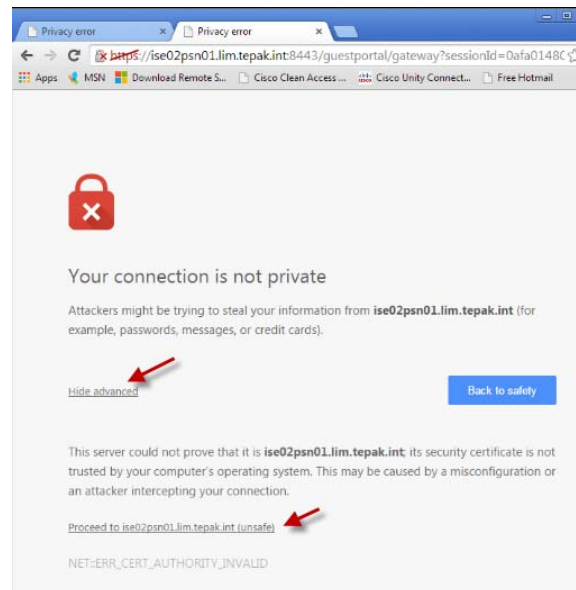
Go to the “Internet Access” icon located on the Windows Taskbar and select to connect to the “CUTvisitors” network. As soon as you get the indication “Connected” open a browser of your choice (internet explorer, safari, opera or chrome) and type a random address in the Address Bar.



If you are using Internet Explorer the following message will appear on the screen informing you that there is a problem with the website’s certificate. This error appears since the website’s certificate is signed by the CUT certificate authority which is unknown to your PC. Press “Continue to this website (not recommended)” to move to the authentication page.



If you are using Google Chrome, a similar message about the certificate will appear. Select "Advanced" and then "Proceed to ise02psn01.lim.tepak.int" to move to the authentication page.



When the "Guest Portal" appears type the username and password provided and select "Sign On". You will get a verification message that the connection is successful and then you can browse the Internet.

